



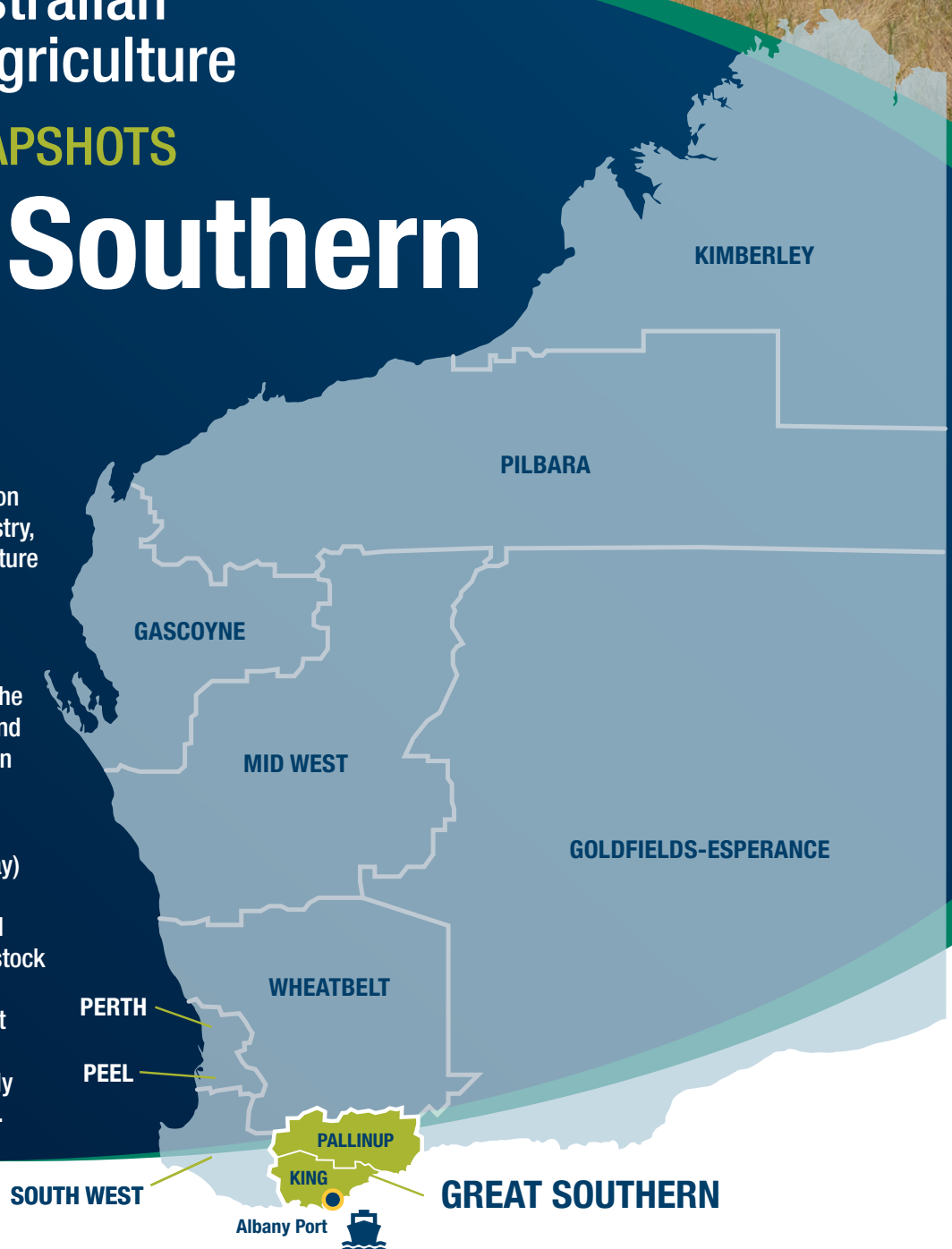
Western Australian broadacre agriculture

REGIONAL SNAPSHOTS

Great Southern

At a glance

- The Great Southern region covers more than 3.9 million hectares. Agriculture, forestry, fishing, tourism and viticulture are the backbone of the region's economy.
- The region has two sub-regions – King along the coast and into the hinterland and Pallinup in the northern and eastern areas.
- Broadacre crops (barley, oats, canola, wheat and hay) generate about 56% of the region's \$1.2 billion annual production value with livestock (sheep, cattle, pigs and chickens) generating about 40%. The remaining 4% of value is generated primarily from fruit/nuts and grapes.



Great Southern region agricultural statistics

About 58% (2.2 million hectares) of the Great Southern region is arable land supporting a broad range of primary industries from horticulture through to fishing, aquaculture, forestry, viticulture and broadacre cropping and livestock production. Broadacre cropping and livestock generate about 96% of the region's annual \$1.2 billion agricultural value and 60% of the region's entire economic activity relates directly or indirectly to agriculture.

 **3,440,000**
Broadacre sheep numbers (2015-16)

29% of WA grainbelt total

 **174,000**
Broadacre cattle numbers (2015-16)

36% of WA grainbelt total

 **80,739**
Pig numbers (2015-16)

32% of WA grainbelt total

 **3,930**
Chicken numbers (2015-16)


0.1% of WA grainbelt total

 **2,480 ha**
Average property size (2019)²

21% of properties are larger than 4,000ha (average 4,845 ha).
Median land value (2020)³ \$4,200/ha

 **2010**
Number of agricultural holdings (2015-16)

32% of entire WA grainbelt

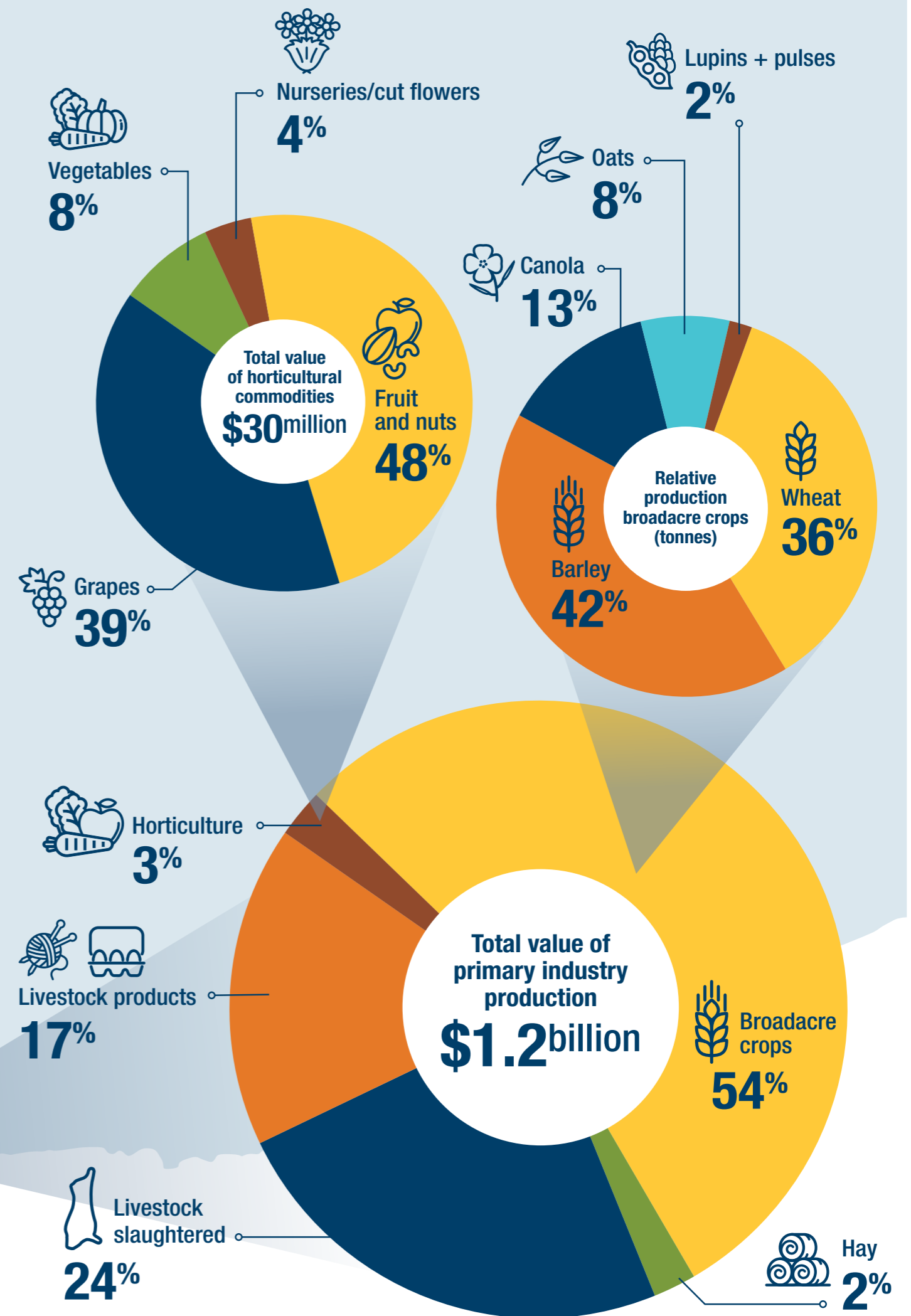
 **3,515,200 tonnes**
Annual broadacre crop production (five-year average 2016-20)¹

26% of WA grainbelt total

 **\$30 million**
Horticulture production (2015-16)

3% of WA total

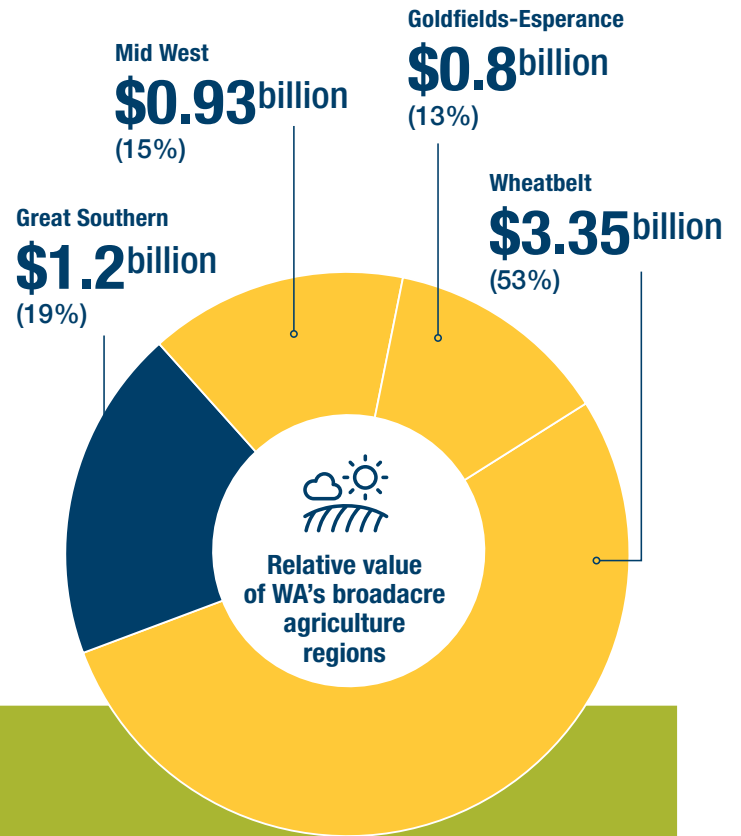
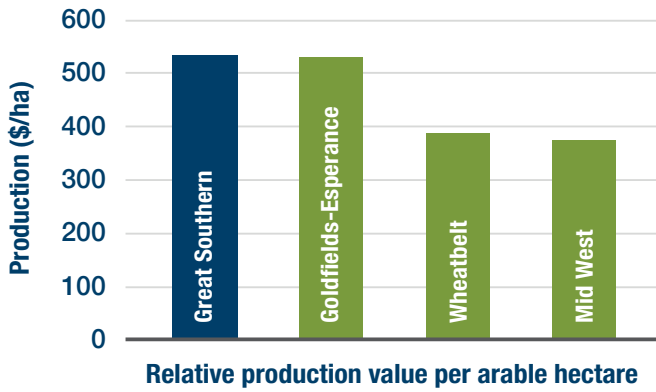
 In 2020, 2.62 million tonnes of grain was exported through the Albany Port⁴.



Source: Australian Bureau of Statistics (ABS), ¹Grains Industry Association of WA, ²DPIRD, ³Rural Bank, ⁴Southern Ports



Region Comparisons



Production values per arable hectare across the regions reflect differences in annual rainfall.



Region Trends



Population (as at 2020)

- 61,351 people in the Great Southern.
- 30% of entire WA grainbelt.



Livestock

- The region has a growing reputation for free range poultry and pork production, which has attracted export opportunities.



Employment (as at 2016)

- 15% (3,867) of employed population in Agriculture, Forestry and Fisheries.
- 35% (2,422) of businesses in Agriculture, Forestry and Fisheries.



Horticulture

- Horticulture in the King sub-region has become a significant contributor to the region's food production. The Albany shire accounts for 70% of Australia's seed potato exports.



Rainfall

- Annual rainfall in the Great Southern region ranges from 700mm in the south-west through to 225mm in the north-east. Average annual rainfall over the past 20 years has declined significantly compared to the region's 100-year average.



Viticulture

- The Great Southern region is WA's second largest wine grape growing region.



Forestry

- Plantation forestry in the Great Southern is estimated to cover >90,000 hectares and be worth \$162 million. Woodchips for biofuel are gaining momentum, with several local governments powering community amenities such as heated swimming pools.



Crops

- Over the past five years (2016-20) wheat production has declined, and barley production has increased.
- About 70% of canola grown is non-GM, which provides a market advantage into the EU where only non-GM canola is accepted.



Aquaculture

- Aquaculture has significant growth potential in the Great Southern. The Albany Multi-Species Mollusc Hatchery opened in December 2017, and the South Coast Aquaculture Development Zone has recently been established.

FOR MORE INFORMATION

Kelly Hill

P: +61(0)8 9892 8507

E: kelly.hill@dpird.wa.gov.au

Important disclaimer

The Chief Executive Officer of the Department of Primary Industries and Regional Development and the State of Western Australia accept no liability whatsoever by reason of negligence or otherwise arising from the use or release of this information or any part of it.

Copyright © State of Western Australia (Department of Regional Development and Primary Industries), 2021

The regional snapshot series are an initiative of the DPIRD Farming Innovation Directorate, please use the following when referencing:

DPIRD Regional Intelligence and Adoption Team (2021) *Broadacre agriculture regional snapshot: Great Southern, Western Australia*. [Brochure] <https://agric.wa.gov.au/n/9181>