



## European wasp

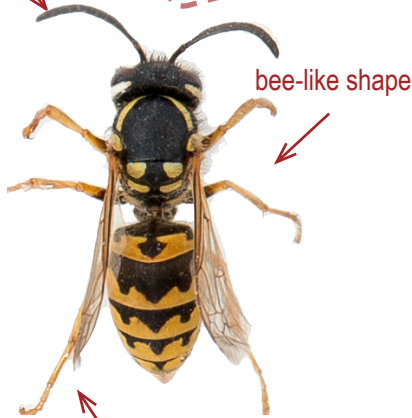


European wasps nest underground and are attracted to meat.



black antennae

**Report**



legs close to the body during flight

## Paper wasp

yellow-orange antennae



legs dangle during flight



Paper wasps nest above ground and are not attracted to meat.



Report suspect European wasps to:  
Department of Agriculture and Food, Western Australia



[mypestguide.agric.wa.gov.au](http://mypestguide.agric.wa.gov.au)



[info@agric.wa.gov.au](mailto:info@agric.wa.gov.au)



1800 084 881





# Spot the difference

## Which one is the European wasp?

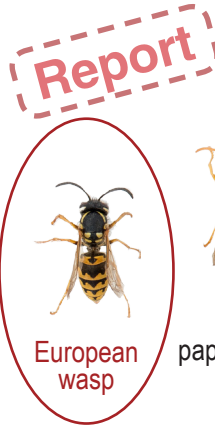
There are a number of black and yellow flying insects commonly mistaken for European wasps. These may include other wasps, bees and flies.



hairy flower wasp



flower wasp



European wasp



paper wasp



bembix wasp



honey bee



hover fly

European wasps have black antennae, usually nest underground and are attracted to meat and pet food.



Report suspect European wasps to:  
Department of Agriculture and Food, Western Australia



[mypestguide.agric.wa.gov.au](http://mypestguide.agric.wa.gov.au)



[info@agric.wa.gov.au](mailto:info@agric.wa.gov.au)



1800 084 881

