

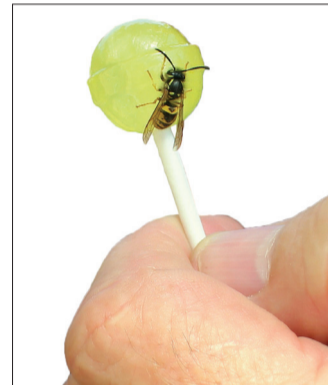


EUROPEAN WASP

detected in this area!



LOOK for these distinct behaviours



- ▶ Feeding on meat, fruit, human food & drinks, pet food, insects & dead animals.
- ▶ Flying in and out of a single hole in the ground (90% of nests are hidden underground).
- ▶ Raised legs during flight (all other wasps dangle their legs).



REACT

- If seen, cover food & drinks or eat indoors. Feed pets inside.
- Move away from any suspect nests and restrict access where possible.
- If stung, seek first aid advice from the Poisons Information Service on **13 11 26**.
- If the person has difficulty breathing, is confused, develops a rash across the body or collapses, phone an ambulance (**000**) immediately.



REPORT

Report **what** you saw (take photos where **safe to do so**), **where** you saw it and **when** it happened:

- Phone: **(08) 9368 3080**
- Report online: visit mypestguide.agric.wa.gov.au to report or download the MyPestGuide™ Reporter app
- Email: padis@dpird.wa.gov.au



DO NOT attempt to destroy a nest

We will attend and control. For more information: agric.wa.gov.au/wasps