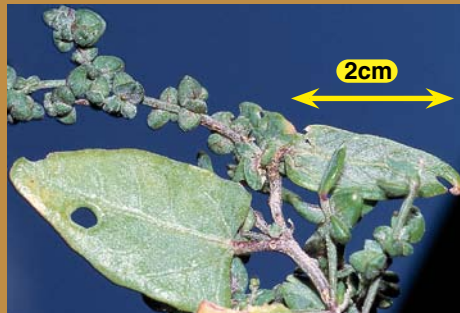
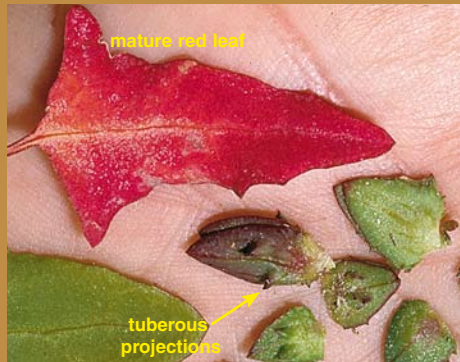


# ORACHE

*Atriplex prostrata*

S5  
SHRUB



# ORACHE

## *Atriplex prostrata*

Sustainable  
Grazing on  
Saline Land



**SALTdeck Series**

© AWI & CRC Salinity 2006

S5

**Alternative names:** Mat Saltbush, Hastate Orache.

**Family:** Chenopodiaceae.

**Description:** Annual prostrate or ascending sub-shrub to 1 m tall. Leaves sometimes mealy on the underside, thickened under saline conditions (see photo). Flowerhead a spike-like panicle with male and female flowers. Seed circular, flattened, both brown or black.

**Key features:** Distinguished by annual habit, flowerhead taking up more than half of the plant, triangular often spear-shaped (hastate) to arrow-shaped leaves. Fruits 3–5 mm long, broad-triangular, one face sometimes with tuberous projections (see photo).

**Value:** Palatable to stock and a useful grazing species in some situations.

**Salinity and waterlogging tolerance:** Moderate tolerance to salinity and waterlogged soil.

**Notes:** Native to Europe, Asia and North America and naturalised in all States except Queensland. Reported a useful forage in Canada, where it has been suggested that the seeds may be suitable for human consumption. Likely to be confused with other *Atriplex* species and the native and more common *Atriplex australasica* is frequently misidentified as *Atriplex prostrata*.

**References:** *Flora of South Australia*, Jessop and Toelken (eds), Part 1, 4<sup>th</sup> edition 1986. *Flora of Victoria*, Walsh and Entwisle (eds), Vol. 3, 1996. *Flora of NSW*, Harden (ed), Vol. 1, 1990. *Plants of Western NSW*, Cunningham et al., 1981.

